



HEDINGHAM SCHOOL
AND SIXTH FORM

PROSPECTUS
2026



Headteacher's Welcome



I am delighted to welcome you to Hedingham School. We are an 11-18 school that provides a high quality educational experience for all students. We strive to ensure that each individual's academic and personal development is fulfilled.

We have a talented and dedicated workforce who tirelessly work to offer a vibrant learning environment including a full and varied curriculum. This includes rich and motivating enrichment opportunities.

Hedingham School is not a school that stands still. Whilst we are anchored by traditional principles deep rooted in the school culture, we continue to develop our facilities, resources and classroom practice to enhance our educational offer.

We expect students to be challenged academically and be proactive in striving to be successful and ambitious, but we are also committed to developing characteristics and attributes so that they can achieve personal success and contribute positively to society.

At Hedingham we offer a secure and caring environment. Students support each other and energy is put into developing positive relationships, which ensure that students are happy and able to flourish.

Pivotal in our success as a school are the strong and trusting relationships between the school and parents. We want parents to take an active interest in their child's progress and attainment, and work with us towards a shared goal.

I am passionate about what Hedingham School can offer and hope that this prospectus, our website and opportunities to visit the school gives you a valuable insight into the nature of our school.

Paul Finch
Headteacher

MISSION STATEMENT

'Hedingham School seeks to create a challenging and stimulating learning environment that encourages high expectations for all learners. Students are prepared for life in the 21st century through a safe, caring and supportive environment. We strive to foster positive relationships with students and staff, offering mutual respect for all members of the community.'

OUR SCHOOL MOTTO IS:

READY RESPECT SAFE

VISION

This vision is driven through our school curriculum. Our aim is to ensure that the curriculum delivers the following principles:

**Knowledge
and Skills**

To provide the knowledge and skills required to be successful learners

**Resilient and
Independent
Learners**

To create resilient and independent learners who are able to meet the challenges of the 21st century

Next Step

To prepare learners for the next step in their education

**Broaden their
Horizons**

To broaden their horizons through a rich and varied enrichment programme

**Active
Citizens**

To encourage learners to be active citizens who contribute positively to the community



Culture

A key element at Hedingham School is the importance we place on culture. Strong academic outcomes and a challenging curriculum are not the whole story.

We also seek to develop excellent character and an understanding of principles that underpin an effective approach to learning.

High standards of uniform and conduct are the corner stone of a safe and purposeful environment.

We expect students to work within these standards and in return we celebrate their individuality, contributions and successes.

CHARACTER EXPECTATIONS



Am I ready for the 21st Century World?

All Hedingham students should develop the characteristics of hard work, perseverance and resilience in their pursuit of ambitious goals in preparation for their 21st Century World



How do I celebrate difference & diversity?

All Hedingham students should respect everyone regardless of race, religion, sexuality, gender or disability

All students should be kind to everyone in the language they use and be accountable for their own actions

All students should positively contribute to their school and wider community



How do I look after myself and others?

All students should learn how to identify and manage risk

All students should be kind and positive digital citizens

All students should look after their health and well-being

Characteristics of a Hedingham School Student



- ① Hardworking**
- ② Perseverant**
- ③ Resilient**
- ④ Kind**
- ⑤ Accountable**
- ⑥ Ambitious**





CLASSROOM LEARNING EXPECTATIONS



Be on time
Be equipped to learn
Be alert and ready to learn



Ensure that you do not disrupt
the learning of others
Be polite and listen to staff and peers



Use equipment appropriately
without causing damage
Remain seated unless given
permission to leave your seat
Follow all teacher instructions
without question

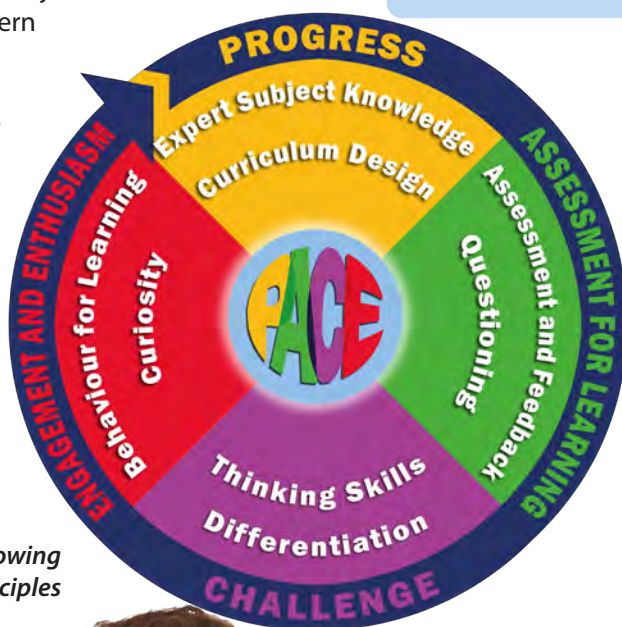
Teaching and Learning

Teaching and Learning is our core business. It sits at the very heart of Hedingham School and we continually work to provide an environment in the classroom that encourages our learners to flourish and grow. We provide challenge, spark curiosity, as well as build important knowledge and skills.

Teaching and Learning permeates into everything that we do and is in the very centre of all school development planning. We strive to meet every child's individual need and value their journey and the destination. Our curriculum provides a breadth that covers traditional academic subjects but also meets the needs of the modern world.

Staff at Hedingham school have an unwavering commitment to professional development and continually explore new strategies to improve learning and progress in the classroom. We work to centralised classroom principles which outline what we constitute as features of consistently high quality lessons.

*Diagram showing
Centralised Principles*



"Teachers
teach
well"
Ofsted,
March 2023

Ofsted
Good
Provider



Whole School Curriculum Aim

Our curriculum is exciting, broad and balanced. It is designed to inspire young people, generate enthusiasm and develop valuable knowledge and skills. The curriculum aims to meet the individual needs of each student to ensure that they make exceptional progress during their time at Hedingham School.

Our aim is to provide challenges and successes for all by offering diverse opportunities in and out of the classroom. Our curriculum is structured to ensure that each individual's academic and personal development is fulfilled.

We offer a vibrant learning environment where students are encouraged to 'think' and explore strategies to grasp and apply knowledge. Our curriculum is carefully sequenced to ensure that students' understanding of key knowledge, skills and concepts are built over their time at Hedingham.

All subject areas carefully design a curriculum to shape a seamless learning experience between years and key stages. Subject curriculums are sequential and allow for revisiting and reinforcement to ensure learning is consolidated and progress is rapid. Details of KS3 subject curriculum "maps" are available on the school website.



Curriculum

Key Stage 3 Curriculum:

English
Mathematics
Science
History
Geography
French*
Dance
Religion, Values and Ethics

Design & Technology
Art
Music
Drama
PE
Computer Science
Personal Development

**All students study French as a single language option*

"Leaders have put in place a well-designed curriculum"
March 2023



Key Stage 4 Curriculum:

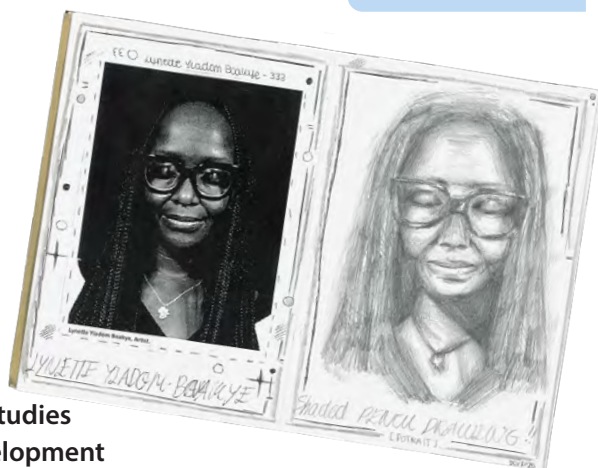
Compulsory Subjects:

English (*Language and Literature*)
Mathematics
Science (*Combined or Triple*)
PE/Dance
Personal Development

Subject Options:

Art
Computer Science
Music
Media Studies
French
Religious Studies
History

Business Studies
Child Development
Drama
Geography
Design & Technology
Food Preparation & Nutrition



Above: Jessica On
KS3 Artwork





The Extended Curriculum

Our broad and balanced curriculum is not limited by the walls of our classrooms and is enhanced through all aspects of school life including:

Assemblies

Leadership opportunities

Trips and Visits

Clubs and enrichment

**Careers advice
and guidance**

**Personal development
and focus days**

In addition to this, annual events such as the Inter-House Arts Festival, Music concerts and Drama productions provide opportunities for each student to extend their skills and interests.

In previous years, the Science department have visited Iceland, Media Studies have ventured to New York whilst the History Department have taken students to Belgium. Moreover, numerous sporting fixtures take place throughout the year. A ski trip and a water sports holiday are now annual events.





Student Support Centre

The Student Support Centre (SSC) is at the heart of Hedingham School's pastoral support. Open throughout the day, it is where our Year Leaders, Pastoral Support Officers, SENCo and one of our Assistant Headteachers are based.

The SSC is there to listen, nurture and support our students in all aspects of their life. Students can report any concerns either in person at the SSC or through the following email address:

safe@hedingham.essex.sch.uk

There are also 'orange card boxes' which are like worry boxes and are situated around the school. This ensures each student has every possible avenue to communicate their concerns.

The SSC takes a lead on many aspects of school life including the Student Parliament and Year Group Council, Anti-Bullying Week, Black History month and charity events.

In addition to this, Hedingham School has a whole school mental health framework to help students recognise, show and

regulate emotions called 'Mood Scales.' Mood Scales help students identify their emotions and give a language to how the young person is feeling. In turn, these help us identify who needs support.

The Year 6 to 7 transition programme is led by our Student Support Team. We plan and deliver numerous activities to support what we know will be a huge step for young people in their education. These include activities such as The Wall of Worry and The Garden of Hope, which explore and discuss common worries about starting secondary school. When students start school in September, they are guided from class to class by our Prefects and have a designated area to meet friends at break and lunch. In addition to this, students take part in a tutor programme called 'The Keys to Hedingham School' which supports our new Year 7's on how to manage secondary school life.

Whatever the worry, whatever the celebration, the SSC and, indeed all staff are here to support each student's journey through Hedingham School.



Personal Development

Students are provided with a programme of Personal Development which focuses on the skills to address 21st Century life. This incorporates Careers Education, E-Safety, Healthy Relationships and educating students on how to identify and manage risk as well as safeguard themselves and each other.



Special Educational Needs & Disabilities

Hedingham School's culture is built around high quality teaching and learning with an inclusive approach to students with Special Educational Needs and Disabilities (SEND) ensuring the vision is the same for all students, whatever their ability or need. Adaptive learning and targeted support ensures that our students make good progress as well as developing independent learning skills.

The SENDCO, Mrs Roxanne Cullen, in collaboration with the Headteacher and Governing Body, play a key role in determining the strategic development of the SEND policy and provision in the school in order to raise the achievement of children with SEND.

"the school values shape us in to adults"

March 2023

Ofsted
Good Provider



Recognising Success

At Hedingham School, we believe 'success breeds success.' As such, every half term, each year group has a Celebration Assembly. Subject Stars are awarded for their efforts in lessons and achievements beyond the classroom.

Students are recognised for their best possible attendance as there is a direct link between regular attendance at school and a child fulfilling their potential. At Hedingham, we operate a House system and each student and their form group will be attached to one of four school Houses. Students can collect House points during the year, both in the classroom and in a host of extra-curricular activities. All Houses compete for the annual 'House Shield', which is presented at the end of the year.

PREFECT



Uniform



We believe that wearing the Hedingham uniform with pride helps students to feel part of our community. It sets a standard which supports our expectations of work and behaviour. In addition to this, dressing appropriately for the work place puts students in the right frame of mind for learning and prepares them for expectations in their future world of work.

***Uniform is available from
Baldwins of Halstead, Essex,
Telephone: 01787 472079***

www.baldwins-departmentstores.com/hedingham-schoolwear



***For further information on Safeguarding,
Special Educational Needs & Disabilities
Uniform and Attendance, please see our website***



Our Facilities

We strive to continue to improve and develop our facilities and provide maximum access for our students. We are fortunate to be in a position to offer specialist facilities that enable us to provide a broad and exciting curriculum.

Distinctive Features of Our School Include:

Our own Sports Hall and Gym
exclusively for the use of our students

Purpose Built Dance Studio and Drama Studio

4G All Weather pitch

Learning Centre equipped with a school library

Smart teaching boards

Music Rooms with practice rooms attached

Designated Sixth Form Area with Sixth Form Cafe

Vocational Centre

Media Suite
New PC's to support learning and progress

Multiple IT spaces available for independent and subject use

Specialist Art rooms, Science Labs and D&T rooms

Student Support Centre with a reception area

Brand new T-Level classrooms



Admissions Policy

The published admission number for students in September 2026 is 196. Places will be allocated using the following criteria in the following order.

- 1 Looked After Children¹**
- 2 Children living in the priority admission area³ with a sibling ² attending the school**
- 3 Other children living in the priority admission area³**
- 4 Children of staff members where the member of staff has been employed at the school**
- 5 Children living outside the priority admission area³ with a sibling ² attending the school**
- 6 Remaining applications**

In the event of oversubscription within any of the above criteria, priority will be determined by straight line distance from home to school, those living closest being given highest priority.

¹ A looked after child or previously looked after child is as defined in the *School Admissions Code 2012*.

² A sibling is defined as a child who has a brother, sister, stepbrother or stepsister living in the same family unit in the same family household and address as a child who attends the preferred school in any year group excluding the final year (Year 13). Biological siblings who attend the preferred school in any year group excluding the final year will also be treated as siblings irrespective of place of residence. Children residing in the same household as part of an extended family, such as cousins, will not be treated as siblings.

³ The priority admission area has no relevance to eligibility for home to school transport. Details of Essex County Council Transport Policy are available on the ECC website.

Please refer to the Secondary Education booklet available on the website essex.gov.uk/admissions for further details on distance calculation, if required.

Years 8 – 11

For mid year applications, a mid year application form needs to be completed and returned directly to the School. A copy of the application form can be requested from:

**The Headteacher
Hedingham School and Sixth Form
Yeldham Road
Sible Hedingham
Essex
CO9 3QH
01787 460470**

Alternatively a form can be downloaded from the school's website. Full details of the mid year application process are provided on the website and in guidance with the mid year application form.

An application for admission to these year groups will be refused if the intended year group of the applicant has already reached the published admission number.

Parents/Carers will be asked if they would like their child's name to be added to a waiting list.

In the event that places become available, applicants will be admitted according to the over subscription criteria.

The waiting lists for the Years 7-11 will be dissolved at the end of each academic year.

Children with Education, Health and Care Plans that name a school in the statement are required to be admitted to the school that is named.

Admissions to Sixth Form

The school is proposing to admit 125 students each year to the Hedingham School Sixth Form, including external applicants. Admission to the Sixth Form will be by reference to qualification to a particular Sixth Form programme of study. The Sixth Form prospectus will publicise the range of programmes, the specific entrance requirements. In the event of oversubscription priority will be determined by straight line distance from home to school, those living closest being given highest priority.

Right of Appeal - Parents have the right of appeal against any refusals of a place, Year 7 or Mid Year. Information on how to appeal is available on the website essex.gov.uk/admissions

General Information

Headteacher:	Mr Paul Finch
Deputy Headteacher:	Mr Chris Abrey
Assistant Headteacher, Student Care & Welfare:	Mr David Nash
Chair of Governors:	Mr Martin Lee
Vice Chair of Governors:	Mr Dan Lee

The School Day

Registration/ Personal Development	8.30am
Period 1	9.00am
Period 2	10.05am
<i>Break</i>	<i>11.10am</i>
Period 3	11.30 am
Period 4	12.30pm
<i>Lunch</i>	<i>1.30pm</i>
Period 5	2.15pm
Finish	3.15pm

Term Dates 2026-2027

Autumn Term starts:	1 September 2026
<i>Half Term holiday:</i>	<i>19 - 30 October 2026</i>
Autumn Term ends:	18 December 2026
Spring Term starts:	4 January 2027
<i>Half Term holiday:</i>	<i>15 - 19 February 2027</i>
Spring Term ends:	25 March 2027
Summer Term starts:	12 April 2027
<i>Half Term holiday:</i>	<i>31 May - 4 June 2027</i>
Summer Term ends:	21 July 2027

At Hedingham Sixth Form as well as offering a comprehensive academic programme that caters for the needs of all our students, we believe it is important that students have an opportunity to learn vital leadership skills that they can take with them when they start university and their careers.



Rory Hyde
Head of
Sixth Form

As part of our Leadership programme, students volunteer in one or more of the following activities:

Peer mentoring

(Supporting KS3 students)

Paired reading

Subject mentoring and tutoring
(KS4 students)

Sports ambassadors

Community ambassadors

Environmental ambassadors

Performing Arts ambassadors

Small animal welfare ambassadors

Sixth Form Council

Model UN club

Tour Guides for visitors

Charity fundraising

Working with the PTA

Headship Team

(our most prestigious positions, voted for by Sixth Form, Year 10, 11 students and staff)

Although this programme is optional the vast majority of students take part in at least one of the above and take great pride in giving back to the community. Students will use the skills they learn on this programme to help them with their applications for university and careers.





www.hedingham.essex.sch.uk